



# RUN Latin America Delegation The University of the Sunshine Coast Research Profile

**Professor Mark Brown**  
**Director, Forest Research Institute**  
**March 2024**

# Who am I and what do I do?

Prof Mark Brown

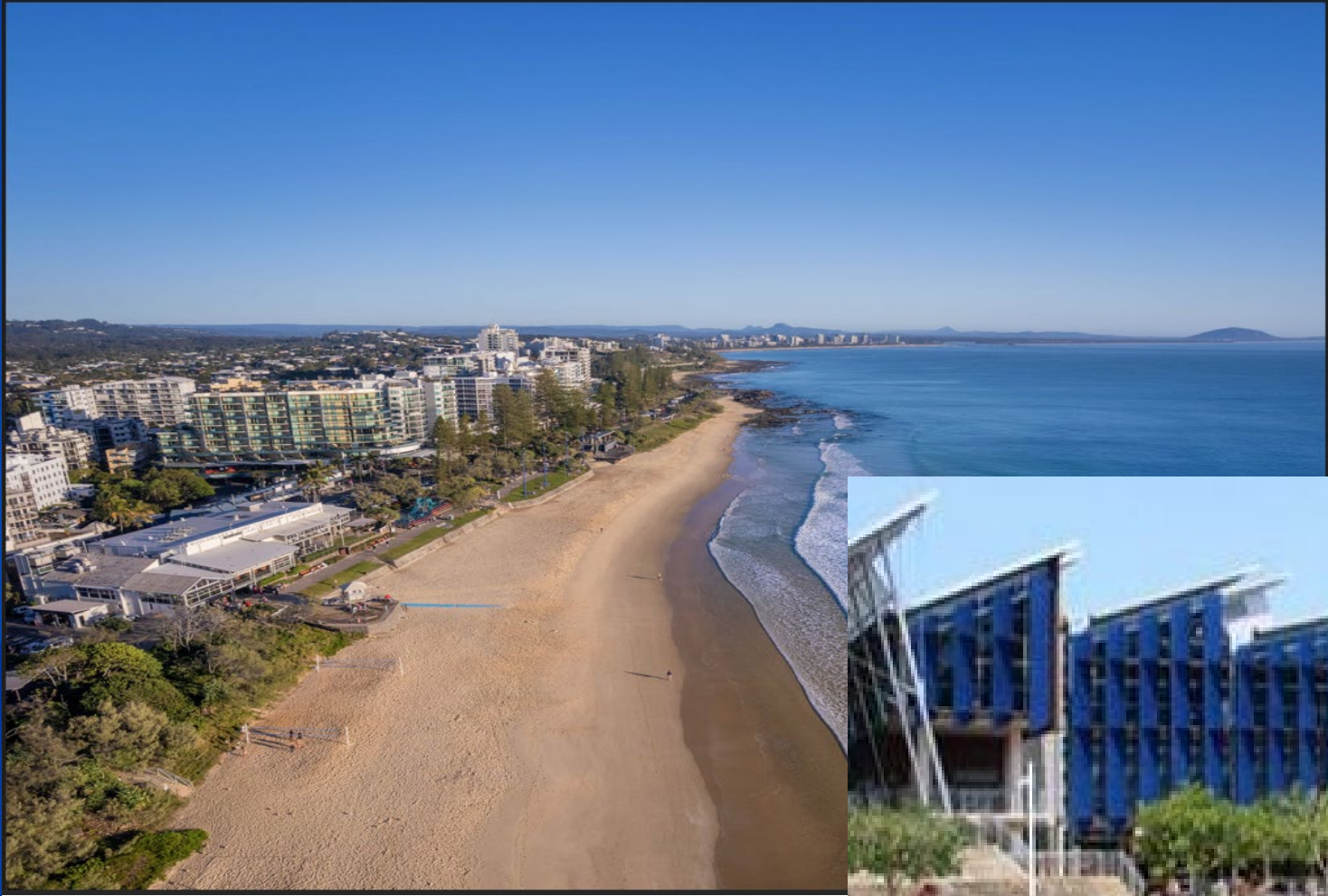
Director of Forest Research Institute

(<https://www.usc.edu.au/staff/professor-mark-brown>)

Prof David Schoeman

Professor of Global Change Ecology

(<https://www.usc.edu.au/staff/professor-david-Schoeman>)

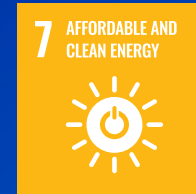


# Our key research focus areas

## HEALTHY PEOPLE



## HEALTHY PLANET



# Research impact



**498**

research  
staff



**548**

HDR  
students



**\$33.5m**

research  
income (2023)



**7,325**

research  
publications  
(2018–2023)

# Australian Centre for Pacific Islands Research

## Research areas and projects:

- Sustainable production systems
- Environmental sustainability
- Peoples and cultures
- Nutrition and health

## RESEARCH IMPACT

# Pacific Islands

- Our research helps improve health and nutrition in Pacific Island communities, finding opportunities to inform food provision and nutrition education programs.
- As the climate changes at unprecedented rates, we develop and apply solutions alongside Pacific Island communities vulnerable to loss of livelihoods due to extreme weather events and longer-term climate change impacts.



# Centre for Bioinnovation

Research themes:

- Applied Microbiology
- Aquaculture Biotechnology
- Biodiscovery
- Conservation and Biodiversity
- Human and Animal Health and Disease



## RESEARCH IMPACT

# Seaweed Research

- Made up of more than 30 academics, students and technical staff.
- Helping communities, government and business identify opportunities to develop and cultivate seaweed as a resource that is good for the economy, the environment and communities everywhere.
- Research focus areas:
  - Seaweed as a food source
  - Seaweeds and their extracts
  - Seaweed as an environmental champion
  - Seaweed for wellbeing



# Forest Research Institute

The Institute is comprised of three Centres:

- Forest Industries Research Centre
- Tropical Forests and People Research Centre
- National Centre for Timber Durability and Design Life





## RESEARCH IMPACT

# Forestry

- Research undertaken by the Forest Research Institute has resulted in a range of recent impacts in the Asia-Pacific, ranging from enhanced reforestation in the Philippines to timber royalty policy enhancements for communities in Papua New Guinea.
- Project Tarsier — a large scale reforestation project funded by carbon credits, enhancing independence and improving livelihoods for communities in the Philippines.



# Biological Control of Eucalypt Pests (BiCEP)

International partnership of eucalyptus growers developing commercial solutions to enhance biological control of insect pests

Australia

Brazil

South Africa

Portugal

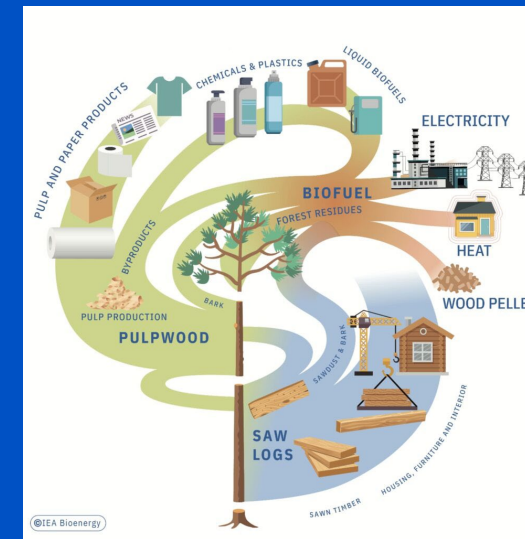


# Bases for International Collaboration



## Australian Forest and Wood Innovation (AFWI)

- Sustainable forests for the future
- Climate change solutions through forests and wood products
- Higher value use of wood and fiber



## IEA Bioenergy TCP



## Natural Capital

- Carbon
- Biodiversity
- Water
- Community/social development