



RUN Latin America Delegation The University of the Sunshine Coast Research Profile

Professor Mark Brown
Director, Forest Research Institute
March 2024

Who am I and what do I do?

Prof Mark Brown

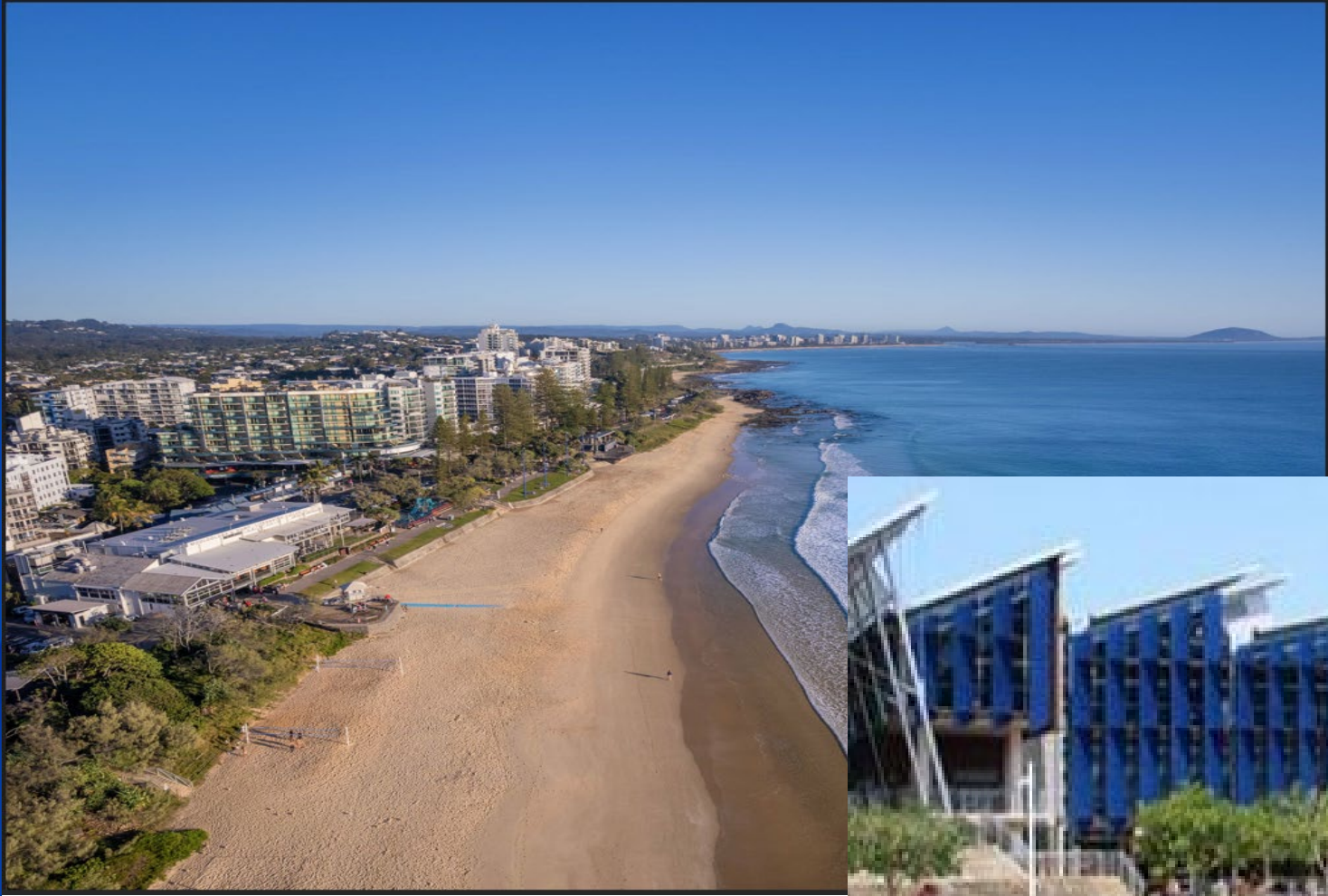
Director of Forest Research Institute

(<https://www.usc.edu.au/staff/professor-mark-brown>)

Prof David Schoeman

Professor of Global Change Ecology

(<https://www.usc.edu.au/staff/professor-david-Schoeman>)

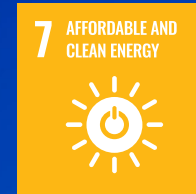


Our key research focus areas

HEALTHY PEOPLE



HEALTHY PLANET



Research impact



498

research
staff



548

HDR
students



\$33.5m

research
income (2023)



7,325

research
publications
(2018–2023)

Australian Centre for Pacific Islands Research

Research areas and projects:

- Sustainable production systems
- Environmental sustainability
- Peoples and cultures
- Nutrition and health

RESEARCH IMPACT

Pacific Islands

- Our research helps improve health and nutrition in Pacific Island communities, finding opportunities to inform food provision and nutrition education programs.
- As the climate changes at unprecedented rates, we develop and apply solutions alongside Pacific Island communities vulnerable to loss of livelihoods due to extreme weather events and longer-term climate change impacts.



Centre for Bioinnovation

Research themes:

- Applied Microbiology
- Aquaculture Biotechnology
- Biodiscovery
- Conservation and Biodiversity
- Human and Animal Health and Disease

RESEARCH IMPACT

Seaweed Research

- Made up of more than 30 academics, students and technical staff.
- Helping communities, government and business identify opportunities to develop and cultivate seaweed as a resource that is good for the economy, the environment and communities everywhere.
- Research focus areas:
 - Seaweed as a food source
 - Seaweeds and their extracts
 - Seaweed as an environmental champion
 - Seaweed for wellbeing



Forest Research Institute

The Institute is comprised of three Centres:

- Forest Industries Research Centre
- Tropical Forests and People Research Centre
- National Centre for Timber Durability and Design Life





RESEARCH IMPACT

Forestry

- Research undertaken by the Forest Research Institute has resulted in a range of recent impacts in the Asia-Pacific, ranging from enhanced reforestation in the Philippines to timber royalty policy enhancements for communities in Papua New Guinea.
- Project Tarsier — a large scale reforestation project funded by carbon credits, enhancing independence and improving livelihoods for communities in the Philippines.



Biological Control of Eucalypt Pests (BiCEP)

International partnership of eucalyptus growers developing commercial solutions to enhance biological control of insect pests

Australia

Brazil

South Africa

Portugal

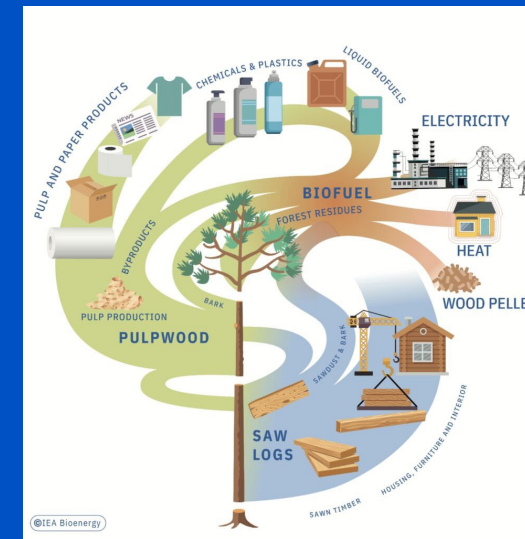


Bases for International Collaboration



Australian Forest and Wood Innovation (AFWI)

- Sustainable forests for the future
- Climate change solutions through forests and wood products
- Higher value use of wood and fiber



IEA Bioenergy TCP



Natural Capital

- Carbon
- Biodiversity
- Water
- Community/social development